

062628

RECEIVED  
LARAMIE COUNTY  
CHEYENNE, WY.

CERTIFIED LAND CORNER RECORDATION

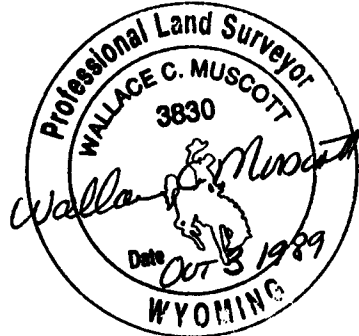
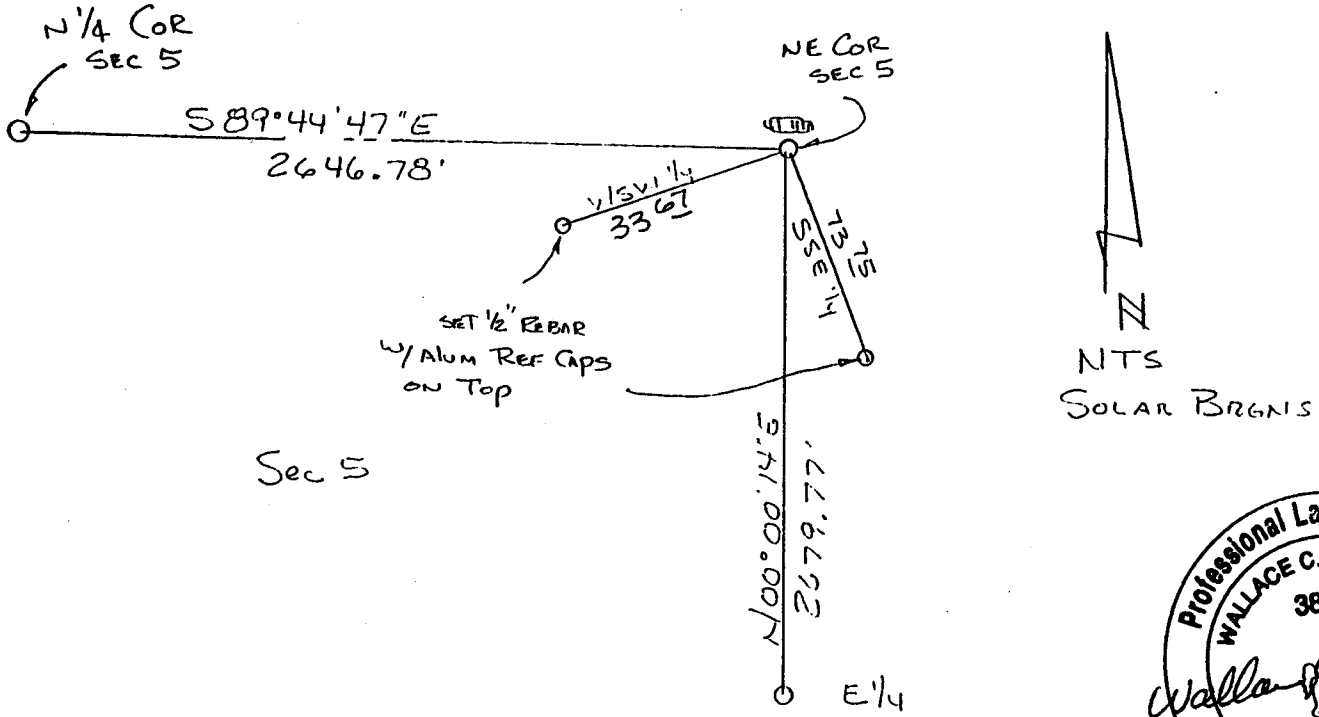
DESCRIPTION OF CORNER EVIDENCE FOUND, AND ORIGINAL RECORD (if known) OCT 5 PM 3 00

FOUND ORIG LIMESTONE COR LYING FLAT W/ 3 CHISEL MARKS ON ONE EDGE & 3 CHISEL MARKS ON OPPOSITE EDGE, WITH A 1" REBAR APPROX 05 SOUTH OF CORNER STONE, PER PREVIOUS MONUMENT RECORD BY YOUNGQUIST. ACCEPTED THE FOUND PIN.

DESCRIPTION OF MONUMENT AND ACCESSORIES ESTABLISHED TO PERPETUATE THE ORIGINAL LOCATION OF THIS CORNER:

REPLANTED STONE 05 NORTH OF 1" REBAR & REFERENCED AS SHOWN BELOW. SET 1/2" REBAR W/ 1 1/2" ALUM. CAP REF. MON. LS 3830.

SKETCH, WITH COURSE AND DISTANCE TO ADJACENT CORNER IF DETERMINED IN THIS SURVEY. (May Sketch or Paste Reproduction on Reverse Side.) AUG 3 1989



I, Wallace C. Muscott certify that I have carefully performed or reviewed the work done on the diagrammed corner as reported on this recordation form and approve the same.

Wallace C. Muscott 3830  
Signature of Surveyor Registration No.

STATE OF WYOMING,  
Office of Clerk and Recorder,  
County of \_\_\_\_\_

This "corner record" was filed for record on the \_\_\_\_\_ day of \_\_\_\_\_, 19\_\_\_\_, was noted on the cross-index plat and is assigned page No. \_\_\_\_\_, in book No. \_\_\_\_\_.

| County Official            |               |               |      |
|----------------------------|---------------|---------------|------|
| Cross Index No. <u>A-9</u> | T. <u>17N</u> | R. <u>62W</u> | Mer. |
| <u>Z-9</u>                 | T. <u>18N</u> | R. <u>62W</u> | Mer. |
| _____                      | T. _____      | R. _____      | Mer. |
| _____                      | T. _____      | R. _____      | Mer. |
| _____                      | T. _____      | R. _____      | Mer. |
| _____                      | T. _____      | R. _____      | Mer. |
| _____                      | T. _____      | R. _____      | Mer. |